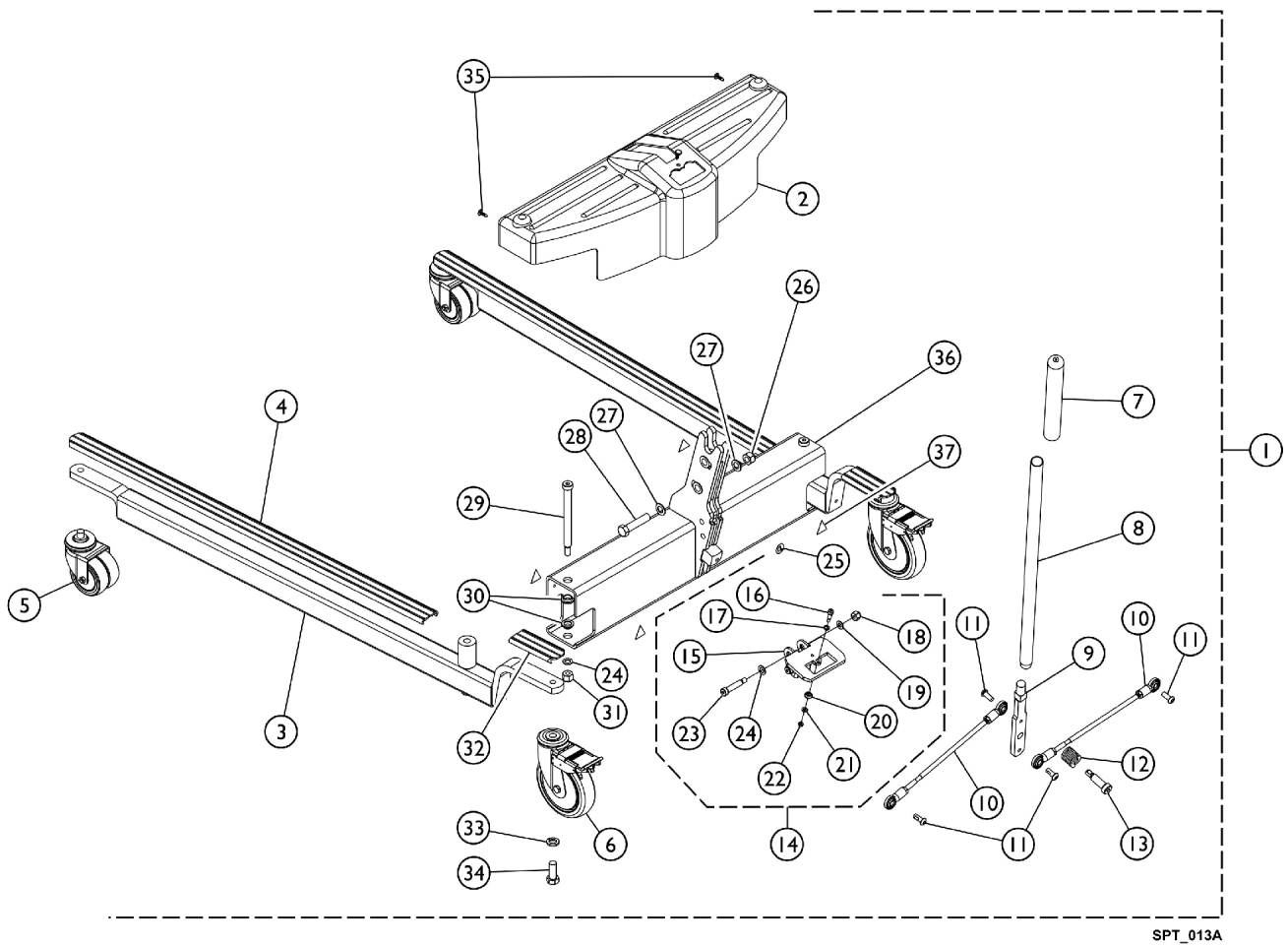


# Base Assembly (After 7/1/10)

## Model RPL/ RPA 450-1, RHL/ RHA 450-1

**NOTE:** After 7/1/10, when using Item 36 (1132033) to replace the previous Cross Support (1078300), Items 14 (1169830) and Item 9 (1156176) should be ordered also.



SPT\_013A

# Base Assembly (After 7/1/10)

## Model RPL/ RPA 450-1, RHL/ RHA 450-1

**NOTE: After 7/1/10, when using Item 36 (1132033) to replace the previous Cross Support (1078300), Items 14 (1169830) and Item 9 (1156176) should be ordered also.**

| Item Number | Note | Part Number | Description  | Quantity Per |          |
|-------------|------|-------------|--|--------------|----------|
|             |      |             |  | Package      | Assembly |
| 1           | A    | 1079810     | Kit, Base - Low, Adjustable                                      | 1            | 1        |
| 1           | A    | 1079811-NLA | NLA - Kit, Base - Standard, Adjustable                           | 1            | 1        |
| 2           |      | 1156185     | Shroud   | 1            | 1        |
| 3           |      | 1095672     | Leg, Adjustable, Low Base, Grey                                  | 1            | 2        |
|             | B,F  | 1095674     | Kit, Legs Adjustable, Low Base, Pair with Covers                 | 1            | 1        |
|             |      |             | Leg, Adjustable, Low Base, Grey                                  | 1            | 2        |
|             |      |             | Cover, Front Leg (Long)  | 1            | 2        |
|             |      |             | Cover, Rear Leg (Short) - Low Base/ Standard Base                | 1            | 2        |
| 4           | M    | 1070114     | Cover, Front Leg (Long)  | 1            | 2        |
| 5           | E,I  | 1123560     | Caster, Swivel Dual (3")   | 1            | 2        |
| 5           | H    | 1070957-NLA | NLA - Caster, Swivel, Front - Adjustable Base (5")               | 1            | 2        |
| 5           | C,G  | 1123545     | Caster Assembly, Swivel (5")                                     | 1            | 2        |
|             |      | 1110422     | Kit, Caster Assembly, Swivel (5") (Pair)                         | 1            | 1        |
|             |      |             | Caster Assembly, Swivel (5")                                     | 2            | 1        |
| 6           | D    | 1123539     | Caster Assembly, Swivel w/ Brake (5")                            | 1            | 2        |
|             | F,L  | 1110421     | Kit, Caster Assembly, Swivel w/ Brake (5") (Pair)                | 1            | 1        |
|             |      |             | Caster Assembly, Swivel w/ Brake (5")                            | 1            | 2        |
|             |      |             | Bushing (15/32 x 1-1/16 x 9/32")                                 | 1            | 2        |
|             |      |             | Instruction Sheet  | 1            | 1        |
| 7           |      | 1032246     | Grip, Cane   | 1            | 1        |
| 8           |      | 1078287     | Handle, Grey   | 1            | 1        |
| 9           | K    | 1156176     | Handle, Mounting   | 1            | 1        |
| 10          |      | 1065152     | Tie Rod Assembly   | 1            | 2        |
| 11          |      | 1155720     | Screw, Socket, Button Head w/ Patch (5/16-18 x 13/16")           | 1            | 4        |
| 12          |      | 1064122     | Spring, Compression (1 x 1-1/16 x 1/8")                          | 1            | 1        |
| 13          |      | 1029134     | Screw, Shoulder Hex Socket Head w/ Patch (1/2" x 1-1/4", 3/8-16) | 1            | 1        |
| 14          | J,K  | 1169830     | Kit, Index Plate w/ Hardware                                     | 1            | 1        |
| 15          |      |             | Bracket, Index Plate   | 1            | 1        |
| 16          |      |             | Screw, Shoulder Hex Socket Head (3/8 x 1-1/2", 5/16-18)          | 1            | 2        |
| 17          |      |             | Screw, Shoulder, Hex Socket (1/4 x 1/2", 10-32)                  | 1            | 1        |
| 18          |      |             | Washer, Flat (1/4 x 3/8 x 1/16)                                  | 1            | 1        |
| 19          |      |             | Washer, Flat (5/16 x 5/8 x 1/16")                                | 1            | 2        |
| 20          |      |             | Locknut (5/16-18)  | 1            | 2        |
| 21          |      |             | Roller, Index Plate  | 1            | 1        |
| 22          |      |             | Washer, Flat (7/32 x 13/32 x 1/16)                               | 1            | 1        |
| 23          |      |             | Locknut (#10-32)   | 1            | 1        |
| 24          |      |             | Washer, Flat (3/8 x 11/16 x 1/16")                               | 1            | 2        |
| 24          |      | 1065214     | Washer, Flat (3/8 x 11/16 x 1/16")                               | 1            | 2        |
| 25          |      | 1079113     | Label, Year of Manufacture                                       | 1            | 1        |
| 26          |      | 1078981     | Locknut (1/2-13)   | 1            | 1        |

# Base Assembly (After 7/1/10)

## Model RPL/ RPA 450-1, RHL/ RHA 450-1

**NOTE: After 7/1/10, when using Item 36 (1132033) to replace the previous Cross Support (1078300), Items 14 (1169830) and Item 9 (1156176) should be ordered also.**

| Item Number   | Note | Part Number | Description   | Quantity Per |          |
|---|------|-------------|---|--------------|----------|
|   |      |             |   | Package      | Assembly |
| 27  |      | 1026174     | Washer (1/2 x 7/8 x 3/64")                          | 1            | 2        |
| 28  |      | 1078979     | Screw, Hex Head (1/2-13 x 2-1/4")                   | 1            | 1        |
| 29  |      | 1062424     | Screw, Shoulder Hex Socket Head (1/2" x 5", 3/8-16) | 1            | 2        |
| 30  |      | 1062419     | Bushing, Flanged                                    | 1            | 4        |
| 31  |      | 1065216     | Locknut (3/8-16)                                    | 1            | 2        |
| 32  | N    | 1079137     | Cover, Rear Leg (Short) - Low Base/ Standard Base   | 1            | 2        |
| 33  |      | 1014371     | Lockwasher (1/2")                                   | 1            | 2        |
| 34  |      | 1073884     | Screw, Hex Head (1/2-13 x 1-1/4")                   | 1            | 2        |
| 35  |      | 1023632     | Clip, Shroud  | 1            | 2        |
| 36  | K    | 1132033     | Cross Support                                       | 1            | 1        |
| 37  |      | 1079112     | Label, Attention                                    | 1            | 4        |
| <p><b>NOTE:</b> A - Includes items 2 thru 37, Shippers Carton and Owner's Manual.<br/> B - Includes Adjustable Leg, Front and Rear Leg Covers. As of 11/09/21 part #1095674 is no longer used for RPL450-1 model.<br/> C - Also available as a pair, see 1110422.<br/> D - Also available as a pair, see 1110421.<br/> E - Caster stem is threaded, no additional hardware is necessary.<br/> F - Not shown in illustration.<br/> G - 5" Wheels used on RHA/RPA lifts only.<br/> H - No longer available, see 1123545 to order replacement.<br/> I - 3" Wheels used on RHL/RPL lifts only.<br/> J - Includes items 15-24.<br/> K - After 7/1/10, when using Item 36 (1132033) to replace the previous Cross Support (1078300), Items 14 (1169830) and Item 9 (1156176) should be ordered also.<br/> L - Bushings added 7/30/12 and used for 9805/9805P Lifts only to provide clearance for the caster to rotate freely.<br/> M - As of 11/09/21 item 4 part #1070114 Long Leg Cover was replaced w/ item 32 part #1079137 Short Leg Cover on RPL 450-1 model.<br/> N - As of 11/09/21 item 32 is assembled to both Front and Rear of RPL 450-1 model.</p> |      |             |   |              |          |